



MICAKIT™

Crestal approach

# MICAKIT™ [REV.04]

(MegaGen Implant Crestal Approach Kit)

Drill safely with confidence!



**New**  
**Express Bur**

- Innovation of Samuel Lee's Internal Sinus Graft System REV.04
- Combined function of Diamond Drill and Reamer Drill



**1. Cleansibility**

The smooth surface makes cleaning easy and leaves no residues after cleaning.

**2. Safety**

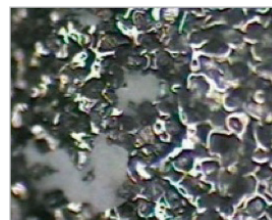
Stopper provides safe drilling without damaging the membrane even when visibility is poor.

**3. Repeated use**

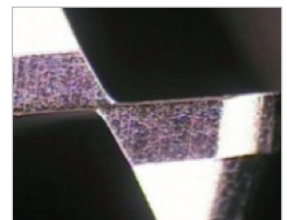
Bone chips are easily removed without getting stuck, so continuous use is possible.

**4. Cutting capability**

Its excellent bone cutting capability eliminates the need to use the pointed or ASBE trephine burs.



Diamond Drill



Express Bur



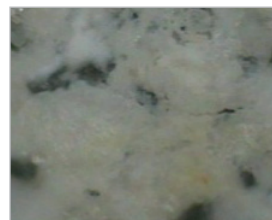
Egg shell test



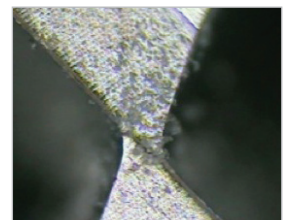
Diamond Drill



Express Bur



Diamond Drill



Express Bur

## ASBE Trephine Bur | Scale 2:1

| Diameter (D) | Length (mm)          | Ref. C   |
|--------------|----------------------|----------|
| Ø3.5/ Ø4.0   | 2/4/5/6/8<br>Marking | ASBESS34 |
| Ø4.0/ Ø5.0   |                      | ASBESS45 |
| Ø5.0/ Ø6.0   |                      | ASBESS56 |



## Point Trephine Bur | Scale 2:1

| Diameter (D) | Length (mm)  | Ref. C   |
|--------------|--------------|----------|
| Ø3.5/ Ø4.0   | 2<br>Marking | SPTB3540 |
| Ø4.0/ Ø5.0   |              | SPTB4050 |
| Ø5.0/ Ø6.0   |              | SPTB5060 |



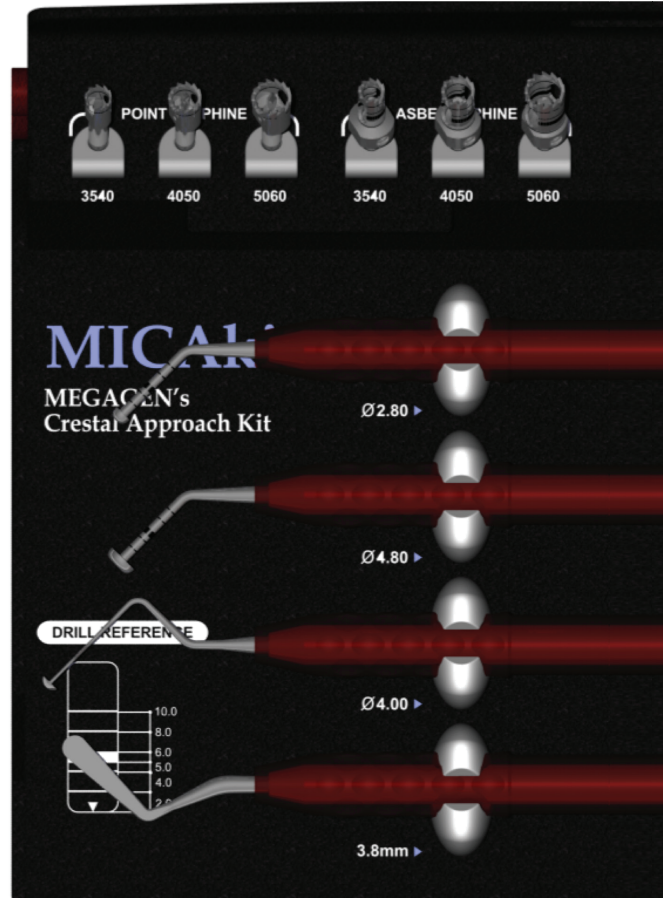
## Mushroom | Scale 2:1

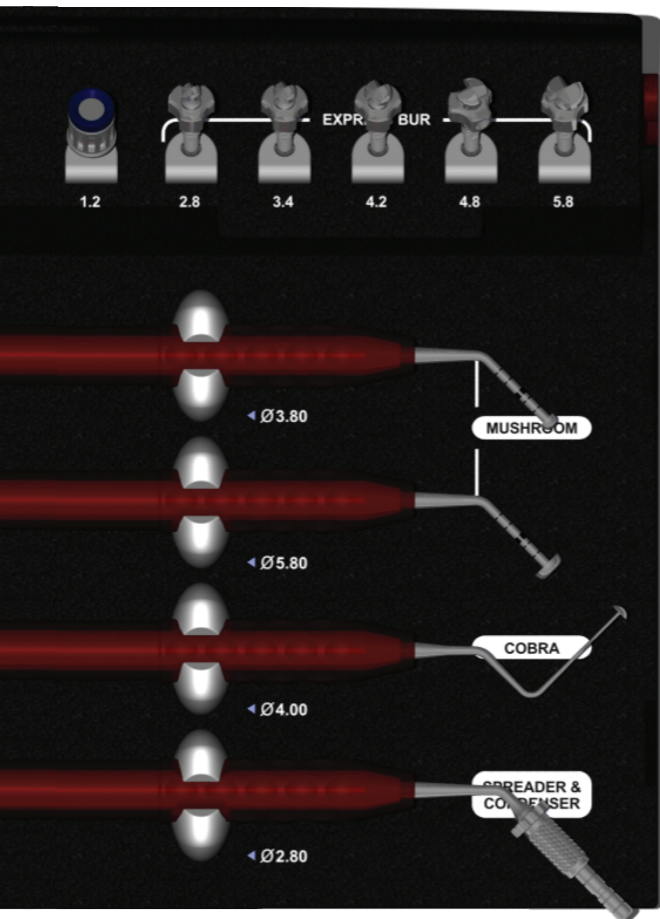
| Diameter (D) | Length (mm)             | REF     |
|--------------|-------------------------|---------|
| Ø2.8/ Ø3.8   | 2/4/5/6/8/10<br>Marking | SMR2838 |
| Ø4.8/ Ø5.8   |                         | SMR4858 |



## Hand Driver | Scale 2:1

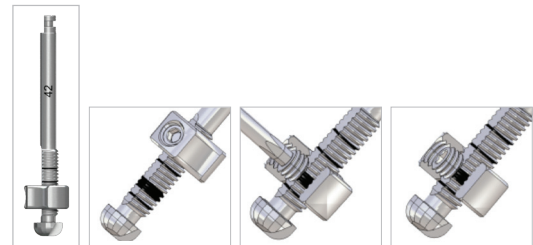
| Type    | Length (mm) | Ref. C     |
|---------|-------------|------------|
| 1.2 Hex | 10          | TCMHDS1200 |





**Express Bur | Scale 2:1**

| Diameter | Length (mm)             | Ref. C |
|----------|-------------------------|--------|
| Ø2.8     | 2/4/5/6/8/10<br>Marking | EB28   |
| Ø3.4     |                         | EB34   |
| Ø4.2     |                         | EB42   |
| Ø4.8     |                         | EB48   |
| Ø5.8     |                         | EB58   |



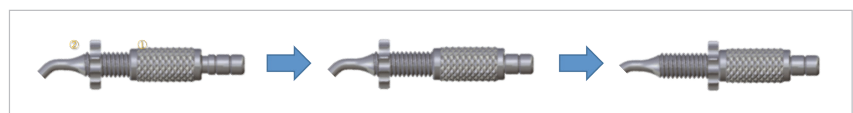
**Cobra | Scale 1:1**

| Diameter   | Length (mm) | Ref. C |
|------------|-------------|--------|
| Ø2.8/ Ø3.8 | -           | SCB401 |



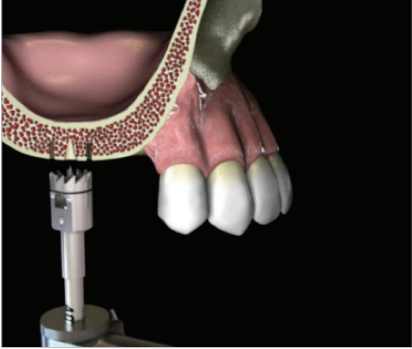
**Spreader & Condenser | Scale 1:1**

| Diameter   | Length (mm)             | Ref. C  |
|------------|-------------------------|---------|
| Ø2.8/ Ø3.8 | 2/4/5/6/8/10<br>Marking | SSC3828 |

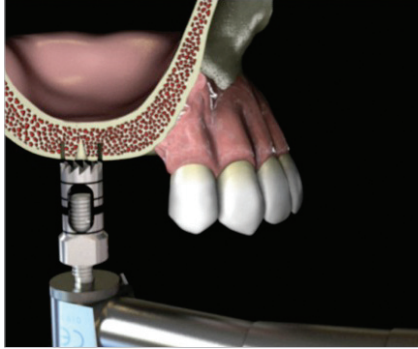




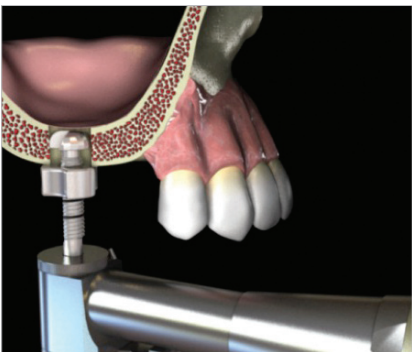
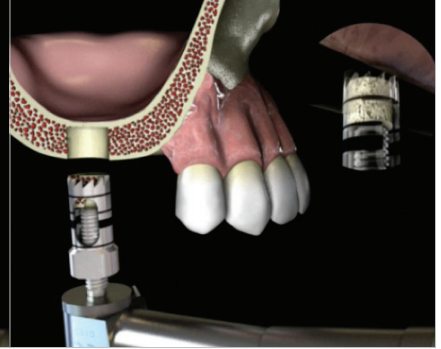
## How to use – Crestal approach



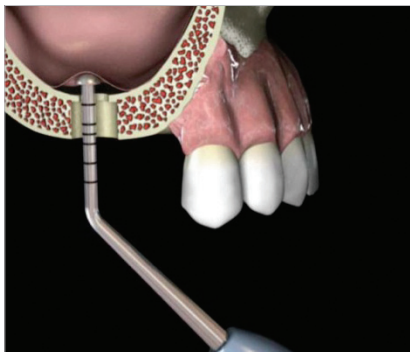
Drill with a Point trephine bur : 2mm at a time until the laser marking is reached.



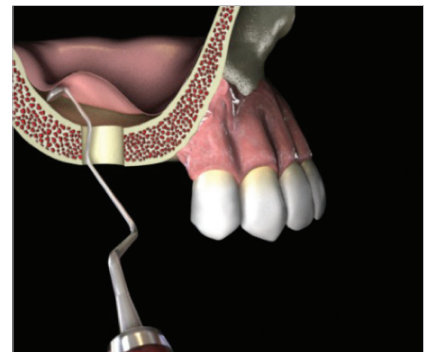
Drill with ASBE Trephine bur until 1-2mm of bone is left and break the bone by slightly tilting the bur. Remove the collected bone in the trephine by unscrewing the Mini Screw and rotating the shank.



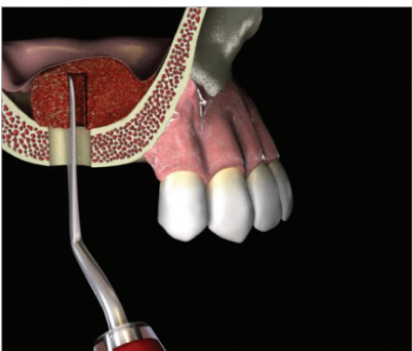
Adjust the position of the stopper to 1mm longer than the remaining bone height and drill with a Express bur 0.7-1mm smaller in size than the diameter of the fixture.



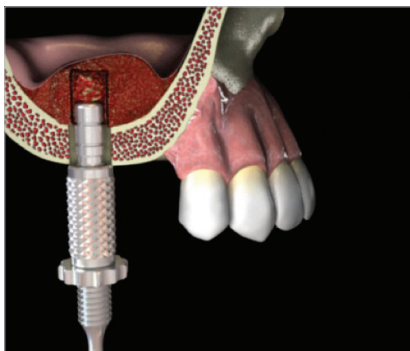
Use the Mushroom to lift the membrane through the hole made.



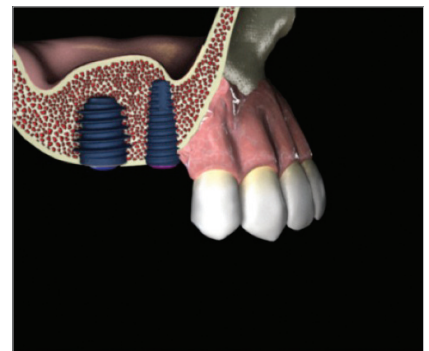
Lift membrane using the Cobra.



Graft the harvested bone and alloplastic material using the Spreader.

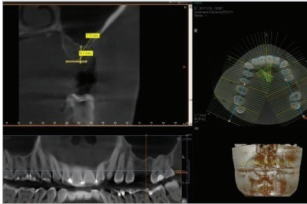


Adjust the stopper of Condenser and press the bone up to desired depth.



Insert fixtures into the holes.

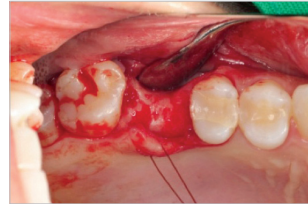
Clinical case 1



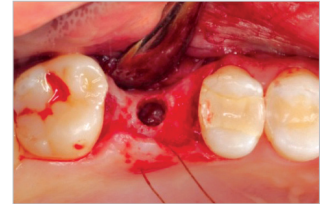
Diagnosis with CT



Before surgery



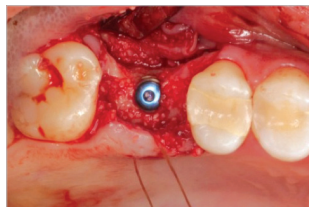
Flap reflection



ASBE Trepine Bur & Express Bur : expand the hole



Spreader & Condenser : bone graft



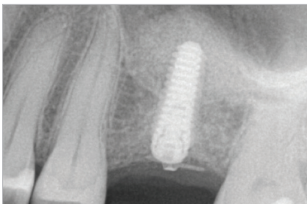
Place a fixture



Graft any buccal defect and place a collagen membrane



Primary closure

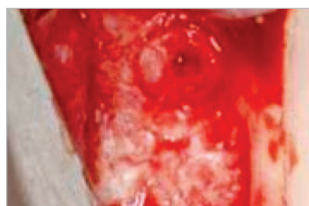


Postoperative Intra-oral radiograph

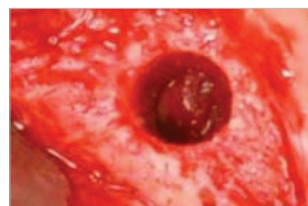
Clinical case 2



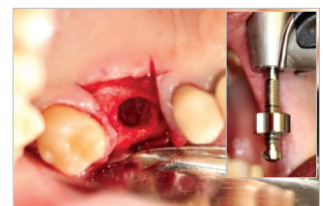
Intra-oral radiograph(Before)



Point Trepine Bur : initial drill



ASBE Trepine Bur : make a hole



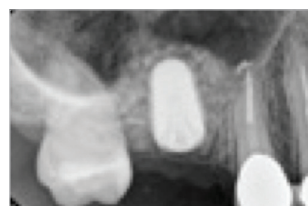
Express Bur : expand the hole



Spreader & Condenser : bone graft



Place a fixture



Intra-oral radiograph(After)



Postoperative Panoramic View